



All New!

WAF-001 (WXR-5810w)

**5.8GHz 1-Watt Amplifier
- EXPORT -**

It's About Real-Time

OPERATION MANUAL

TABLE OF CONTENTS

TABLE OF CONTENTS 2

SAFETY NOTICES..... 2

PARTS LIST 3

SYSTEM SETUP 4

Connections..... 4

Important..... 4

SPECIFICATIONS..... 5

WARRANTY INFORMATION/ TERMS & CONDITIONS..... 6

SAFETY NOTICES

I. THIS DEVICE DOES NOT COMPLY WITH FCC RULES

and is intended for re-sale to law enforcement or government agencies and export only.

OPERATION IS SUBJECT TO THE FOLLOWING TWO CONDITONS:

- (1) Using this device with an FCC approved transmitter device will render that device “NoN-compliant” and may be subject to any laws or regulations governing the use of said device.
- (2) Purchaser assumes all liability or damage resulting from the use, misuse or unlawful use of the product – and - the product will be used in a legal and lawful manner in accordance with all applicable federal, state and local laws.

II. In order to comply with the FCC/IC adopted RF exposure requirements, this transmission system will be installed by an authorized installer. Installation of all antennas must be performed in a manner that will provide at least 23cm clearance from the front radiating aperture, to any user or member of the public.

III. This is NOT an intrinsically safe device. Do not take into area where intrinsic safety is required. Bodily harm may result if warning is ignored.

IV. **DO NOT OPERATE TRANSMITTER WITHOUT ANTENNA CONNECTED TO ANTENNA PORT.** Failure to do so will result in permanent damage to the unit and void the warranty.

V. **DO NOT OPERATE THE SYSTEM WHEN the Transmitter & Receiver are closer than ten feet to each other.** The devices may not work properly and permanent damage can occur.

VI. The device has **NOT** been certified by the FCC for use with other products without any further certification (as per FCC section 2.1091.) Changes or modifications not expressly approved by VideoComm Technologies could void the user’s authority to operate the equipment.

PARTS LIST

The 5.8GHz 1-Watt Amplifier has been carefully manufactured, tested, inspected and packaged. Please inspect the packaging carefully to ensure you have received all the necessary parts and accessories listed. Refer to the following chart to determine which parts are included with your product. If any parts are missing or damaged, contact **VideoComm Technologies**, Customer Service or your re-seller immediately.

PARTS	TC-5808
5.8GHz 1-Watt Amplifier - # WXR-5810w	One
Power Cable – 3-pin DIN Type	One
12VDC Power Supply - # PS-1250	One
Tx Antenna Jumper Cable - # A-RG178SSM	One



SYSTEM SETUP

WXR-5810w is designed for extending the range of 5.8GHz wireless radio devices, the system boosts any 5.8GHz analog transmitter signal through multiple walls or obstacles. Its IP-65 waterproof rated enclosure makes it suitable for use in any outdoor or indoor environment.

Connections

WARNING – DO NOT POWER-UP THE TRANSMITTER OR AMPLIFIER UNTIL ALL RF CONNECTIONS ARE MADE FIRST.

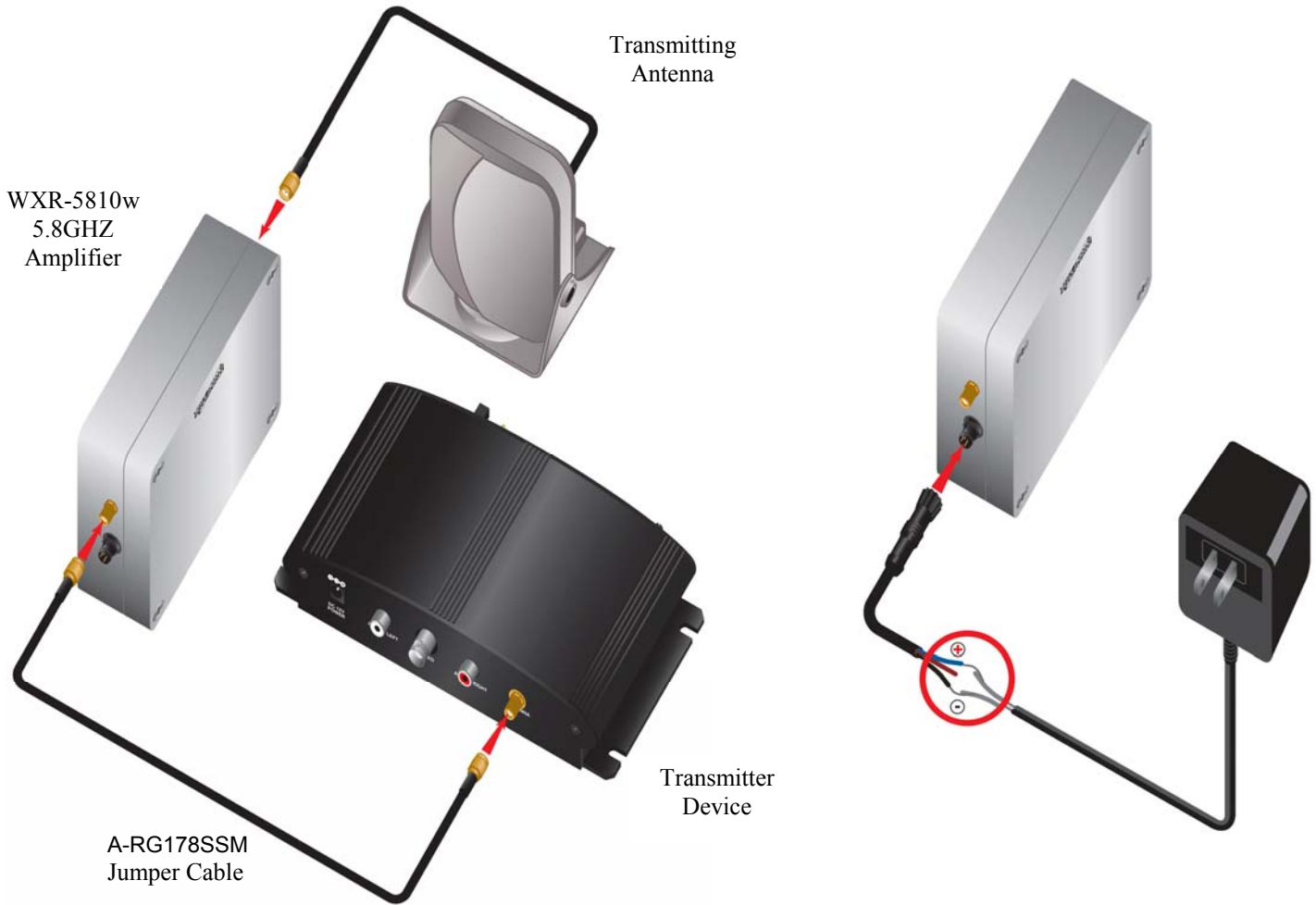
Failure to do so will result in permanent damage to both your transmitter device, the amplifier unit and will void the warranty.

We strongly recommend that connections to all devices be made in series starting from the antenna and working your way towards the transmitter device.

- Step 1. Ensure all devices are powered down with no live voltages
- Step 2. Connect your transmitter antenna and cable to the “**RF - OUT**” connector on the WXR-5810w amplifier.
- Step 3. Connect the antenna jumper cable (A-RG178SSM included), from the “**RF - IN**” connector on the WXR-5810w amplifier, to your transmitter device antenna port.
- Step 4. Make CCTV video connection to your transmitter
- Step 5. Connect the WXR-5810w power cable to the amplifier and power-UP using the included power supply.
- Step 6. Now connect and power-UP your transmitter device.

Important

- There are no adjustments to be made to the WXR-5810w amplifier.
- If you need to turn OFF your system, reverse the order of connections from above.
- Never touch a “live” antenna on the transmitter. Depending on the transmitter antenna in use, you could be burned.
- Do not extend the cable length between devices
- Do Not attach this device to a Video Receiver



SPECIFICATIONS – WXR-5810w

Operating Frequency	5.0 GHz – 6.0 GHz
Transmitter Output Power	1 Watt
Antenna IN-OUT Connector	SMA-Female @ 50 Ohms Impedance
Jumper Cable	6” low loss microwave cable SMA-Male to SMA-Male
Construction	IP-65 Steel Enclosure
Temperature Range	-22 to +150 degrees F
Operating Voltage	12 - 28 VDC - Polarity Protected
Current Consumption	380mA @ 12VDC - 90% efficient, switching regulator
Dimensions	5.0” x 3.1” x 1.6”
Weight	239 g or 8.4oz each
Approvals	NONE – This product is intended for re-sale to law Enforcement - Government agencies and export only.

WARRANTY INFORMATION/ TERMS & CONDITIONS

VideoComm Technologies, herein referred to as "VCT."

LIMITED WARRANTY

VCT hereby warrants, subject to the conditions here in below, that should this product become defective by reason of improper workmanship or material defect during the specified warranty period, VCT will repair the same, effecting all necessary parts without charge for either parts or labor, or replace the unit at VCT option.

Labor: ONE (1) Year from the date of original purchase from authorized Re-seller. TWO (2) Years for Antennas only.

Parts: ONE (1) Year from the date of original purchase from authorized Re-seller. TWO (2) Years for Antennas only.

Void Warranty

Purchaser warranty will be void and purchaser waves any rights to make warranty claim if product has been opened, altered or modified, repaired or serviced by anyone, other then the service facilities authorized by VCT to render such services. Further, the seal/serial number on the unit must not have been altered or removed. The unit must not have been subject to accident, misuse, abuse or operated contrary to the instructions provided. The opinion of VCT with respect to this matter shall be final. This warranty does not include and is not extended to broken and damaged accessories, batteries and exposed antennas and to parts wearing out due to normal wear and tear.

Proper Delivery:

Returned products will not be accepted for warranty repair unless accompanied with a valid Return Merchandise Authorization (RMA) number issued by VCT. RMA numbers issued by VCT are valid for 15 days. Shipments received after 15 days will be refused. The unit must be shipped, freight prepaid or delivered to the VCT Service facility, in either its original package or similar package, affording an equal degree of protection and with instructions indicating the location within Canada or the United States to which the unit will be returned. The repaired unit will be returned to the customer freight prepaid unless the warranty claim is deemed void or invalid. All accessories included with the unit must be listed individually on the packing slip for the shipping documentation. VCT will not accept any liability, for loss or damage to such accessories if they are not listed.

Proof of Purchase Date:

This warranty applies and commences to VCT products, from the original date of purchase from an Authorized Re-seller. Proof of purchase (i.e.: photocopy of invoice), must be included with product when submitting for warranty repair.

Warranty Limitations:

This warranty does not cover maintenance or check-ups, if required. This warranty gives you specific legal rights and you may also have other rights, which vary from state/province to state/province. Some states/provinces do not allow the exclusion or limitation of incidental or consequential damages or limitations on how long an implied warranty lasts, therefore the above exclusions or limitations may not apply to you. VCT is not responsible or liable for indirect, special, incidental or consequential damages arising out of or in connection with, the use or performance of the product or other damages with respect to loss of property, loss of revenues or profit, or cost of removal, installation or reinstallation.

PRODUCT RETURNS

30 Day Product Return Policy ** If you are not satisfied with a product, you may return it to VCT within 30 days from original date of shipment within the following conditions:

- ◆ Original shipping charges are not refundable unless deemed that VCT shipped incorrect item(s), incorrect quantity (ies) or original manufacturers defective product (subject to VCT validation).
- ◆ Returned products will not be accepted unless accompanied with a valid Return Merchandise Authorization number (RMA).
- ◆ RMA numbers issued by VCT are valid for 15 days. Shipments received after 15 days will be refused.
- ◆ Returns must include a copy of original invoice, the completed VCT packing slip, and a detailed statement of reason for return.
- ◆ Customer is responsible for all freight charges, duties and taxes, if applicable. Product must be properly packaged and shipped, prepaid to VCT in its original packaging, or similar packaging that offers an equal degree of protection. VCT will charge the full replacement cost for any missing components or parts. VCT is not responsible for lost or damaged merchandise. We strongly recommend insuring products for return shipping.
- ◆ Return claims are void if manufacturer's seal is broken and/or products are altered or modified, subjected to an accident, improper handling, improper installation, misuse and abuse or operated contrary to the operating instructions. Products returned that are not in "re-saleable" condition will be returned to customer at their expense.
- ◆ Discontinued items, special or custom-made equipment items (items not carried as stock even though they may appear on price lists) may not be returned. Returned products will be evaluated at the original purchase price and not at any subsequent price increase or decrease.

** Subject to the conditions stated above, the following re-stocking fees will apply to products returned for credit/refund.

VCT reserves the right to determine the validity of the product returned and / or refuse to accept product for credit.

0 % Re-Stocking Fee (less original shipping charges): If product is returned within 30 days from original VCT ship date.

25% Re-Stocking Fee (less original shipping charges): If product is returned within 60 days from original VCT ship date.

50% Re-Stocking Fee (less original shipping charges): If product is returned within 90 days from original VCT ship date.

100% Re-Stocking Fee (0% credit) : If product is returned after 90 days from original VCT ship date.

DISCLAIMER

In no event will VCT or any of its affiliates be liable for any indirect, special, punitive, consequential liability, or incidental damages upon any basis of liability whatsoever even if advised of the possibility of such damages. In addition, VCT does not take any responsibility or assume any liability for the wiring, installation or placement of the equipment Customer purchases, or for the activities of any other individual or entity such as Customer's Company, those who prepare the specifications or any local Authorities who inspect or approve Customer's installation.